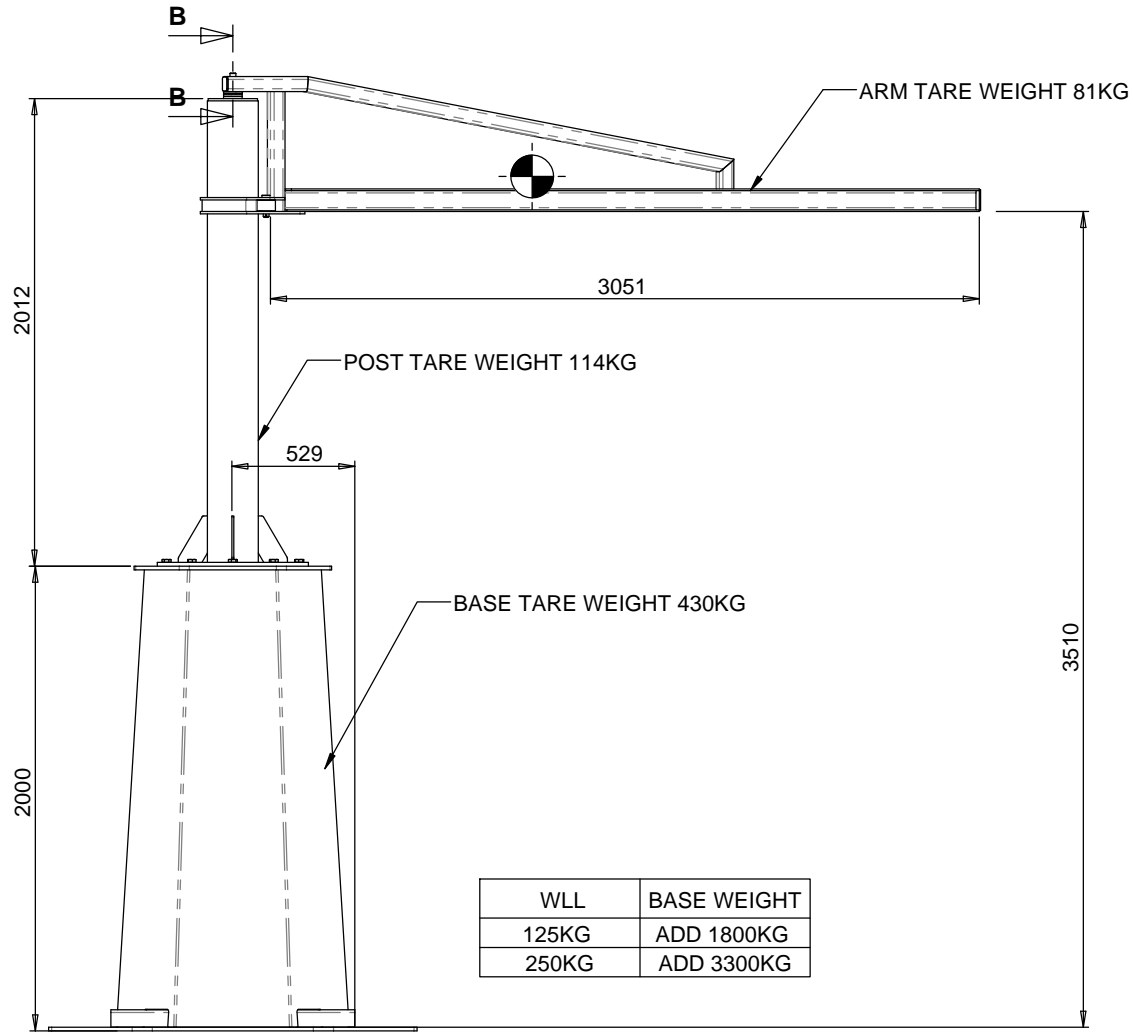


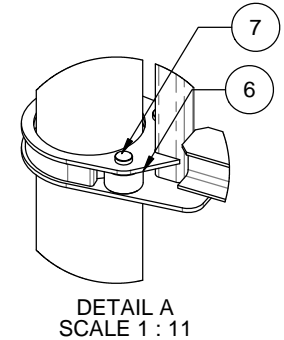
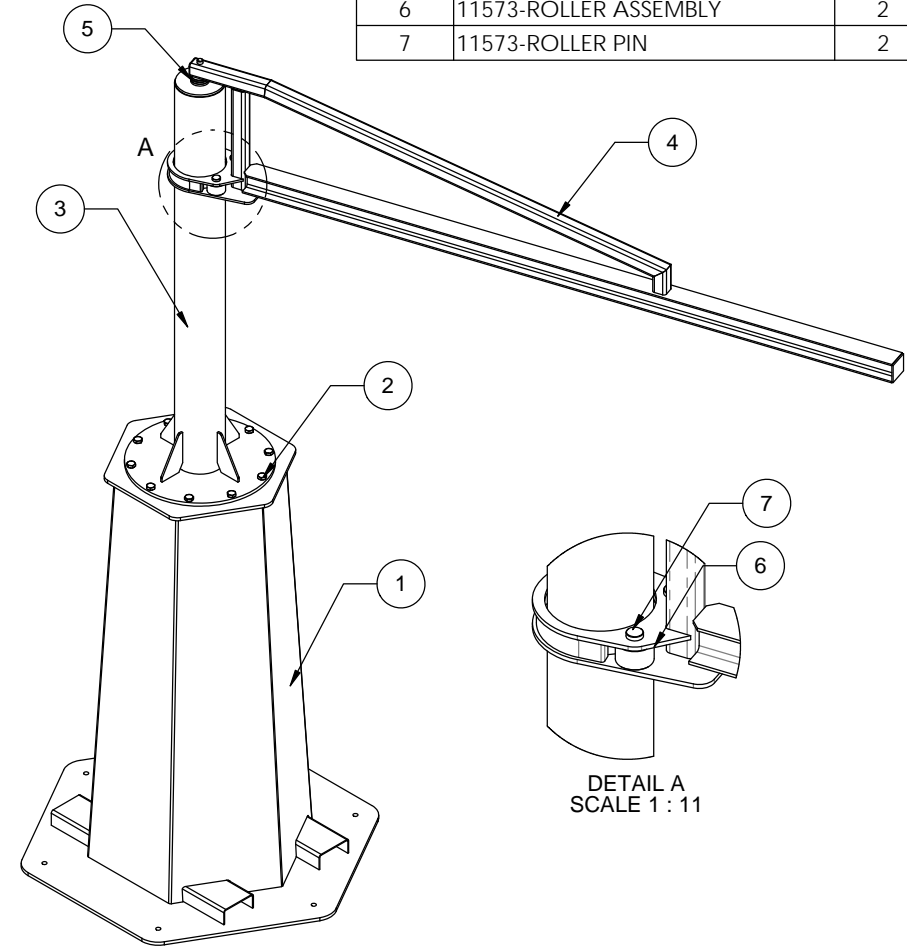
SECTION B-B
SCALE 1 : 8

NOTES:

1. ALL WELDING TO COMPLY TO AS 1554.1 CAT SP
2. ALL WELDS 6mm C.F.W. UNLESS OTHERWISE NOTED
3. ALL STEEL PLATE TO COMPLY TO AS3678 GRD250
4. ALL STEEL SECTION TO COMPLY TO AS3679 GRD300
5. ALL STEEL HOLLOW SECTIONS TO COMPLY TO AS1163 GRD350
6. PROOF LOAD & MARKINGS TO COMPLY WITH AS1418.18
7. FINISH POWDER COAT SAFETY YELLOW



ITEM NO.	PART NUMBER	QTY.
1	11573-BASE	1
2	M20 x 40 GRD 8.8 HEX HEAD BOLT	10
3	11573-KING POST	1
4	11573-ARM ASSEMBLY	1
5	11573-ERTALON BEARING	1
6	11573-ROLLER ASSEMBLY	2
7	11573-ROLLER PIN	2



DETAIL A
SCALE 1 : 11

APPROVE FOR MANUFACTURE	
PRINT NAME:	
SIGNATURE:	
DATE:	

DRAWN	RM	TITLE 125KG SWING ARM GANTRY	
CHECKED		SIZE 125KG - 250KG	SCALE 1:23
APPROVED		PROJECT GANTRIES	DATE 27-Jul-15
		DWG 11573 - 1	REV 0