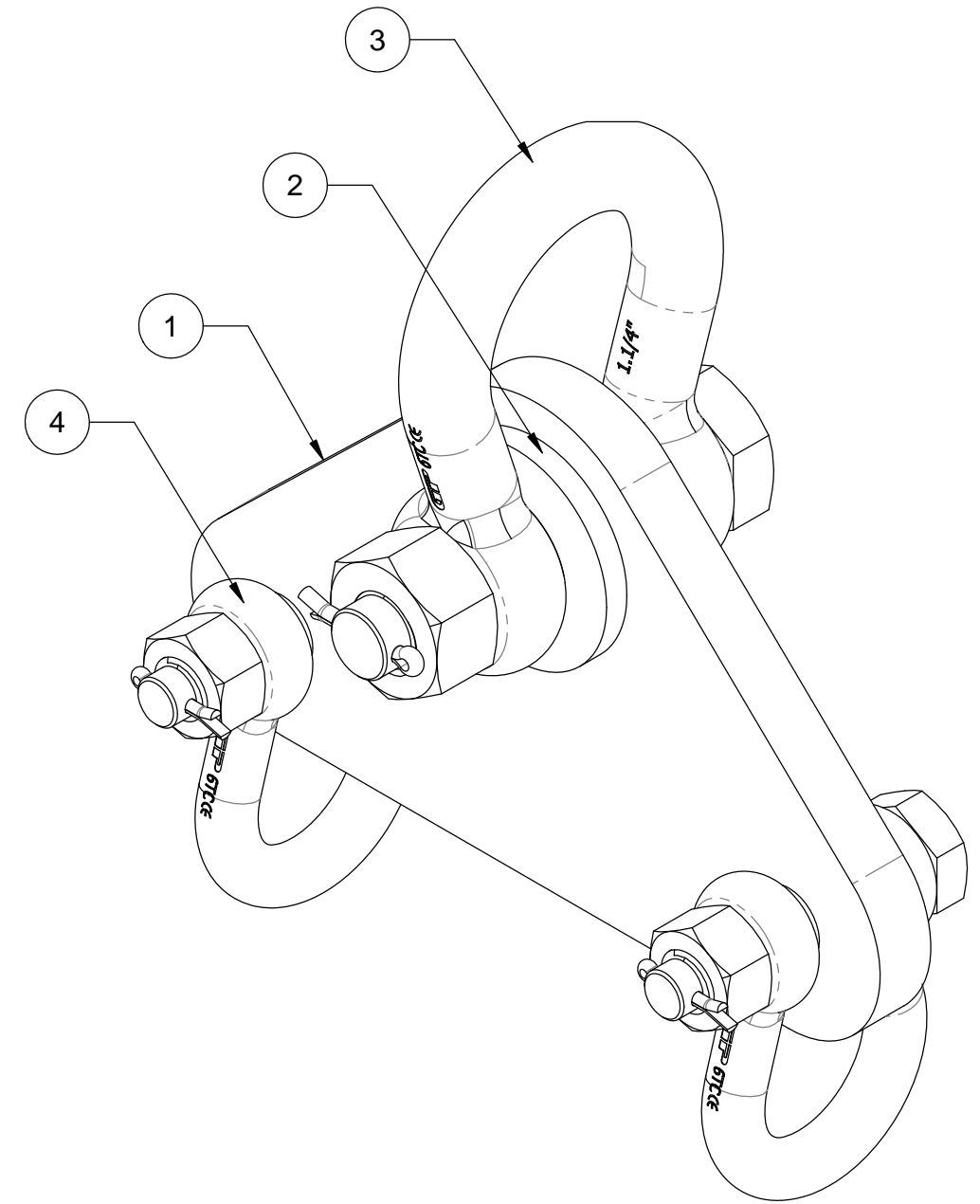
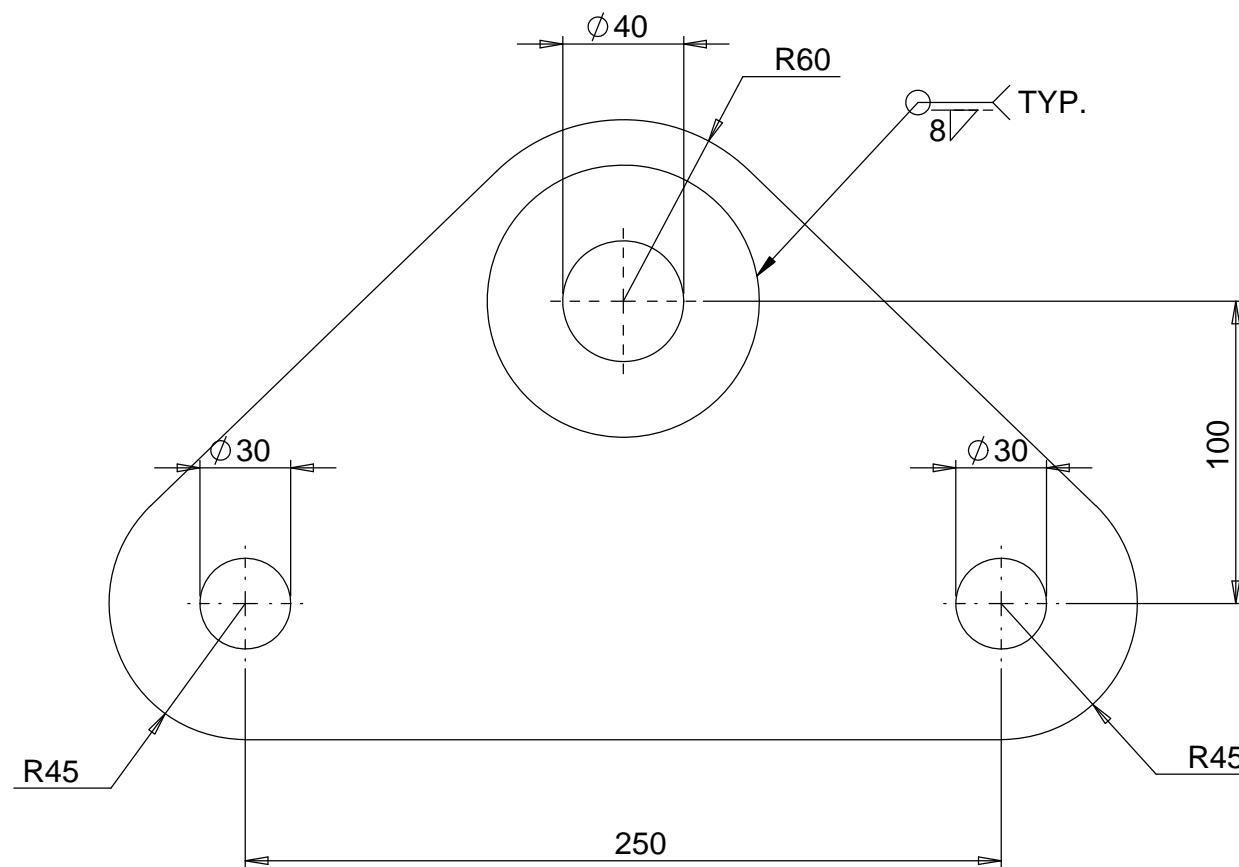
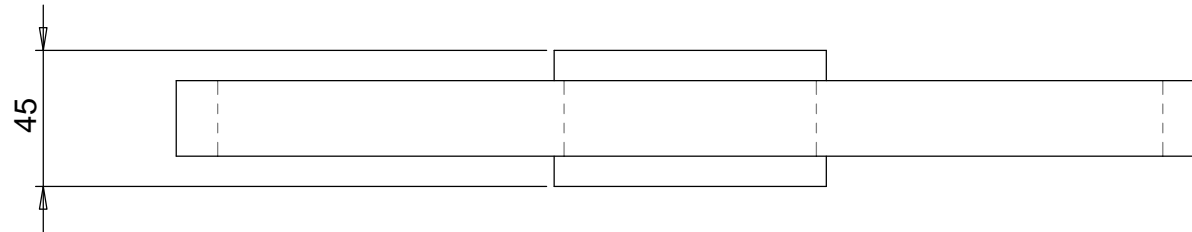


NOTE:

1. ALL WELDING TO AS 1554.1 CAT SP
2. ALL STEEL PLATE TO AS 3678
3. MAX.SLING APEX ANGLE 60 DEGREES
4. PROOF LOAD & MARKINGS TO AS 4991
5. TARE WEIGHT WITH OUT SHACKLES 9KG
6. POWDER COAT Y-15 SAFETY YELLOW



ITEM NO.	PART NUMBER	QTY.
1	11357-TRI-PLATE	1
2	11357-CHEEK PLATE TOP	2
3	11357-12T SAFETY BOW SHACKLE	1
4	11357-6.5T SAFETY BOW SHACKLE	2

D.O.T.
ENGINEERING

1 / 57 PARAMOUNT DRV
WANGARA. 6065
WESTERN AUSTRALIA.

TEL: (08) 9302 4166

FAX: (08) 9302 4099

THIS DRAWING AND THE INFORMATION ON IT
REMAINS THE PROPERTY OF DOT ENGINEERING
WRITTEN PERMISSION MUST BE OBTAINED FROM
DOT ENGINEERING TO COPY OR REPRODUCE
THE WHOLE OR PART OF THIS DRAWING.

DRAWN	RM	TITLE 10 TONNE EQUALISING PLATE			
CHECKED		SIZE 10T WLL	SCALE 1:2.5	DATE 18-Feb-14	
APPROVED		PROJECT TRI-PLATES	DWG 11357 - 1	REV 0	