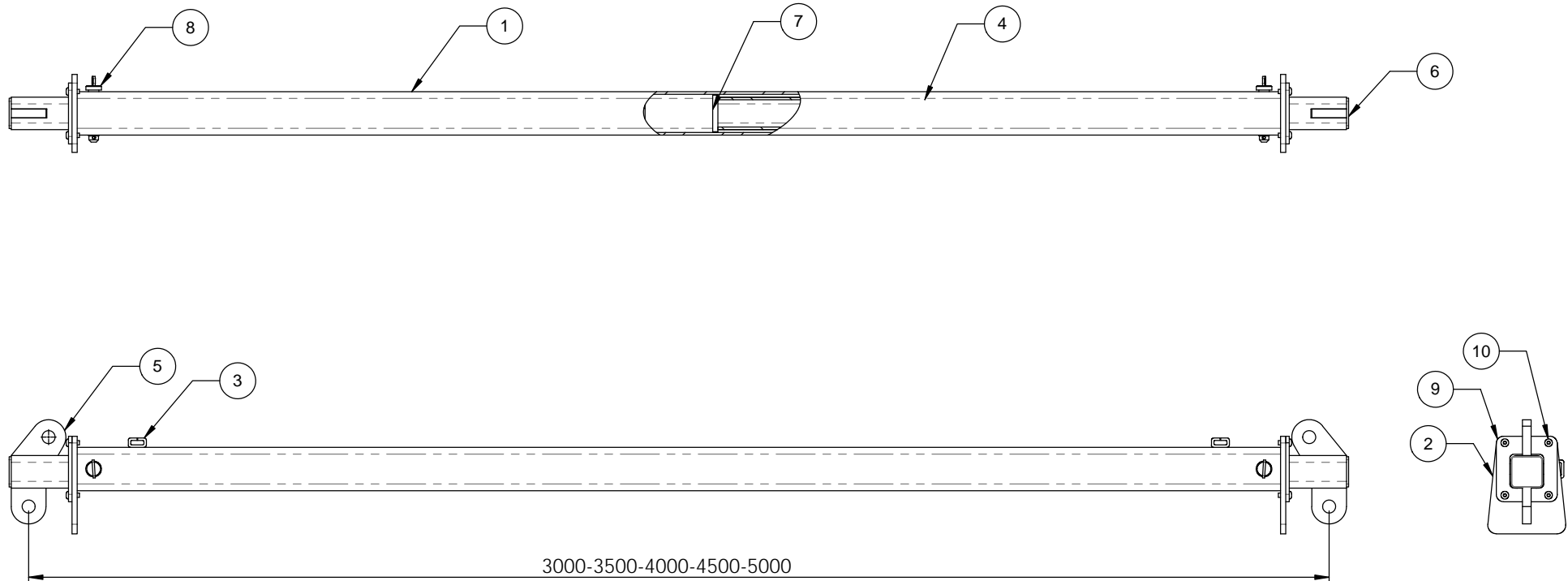


ITEM NO.	PART NUMBER	QTY.
1	OUTER BEAM	1
2	GUIDE PLATE	2
3	SPLIT LINK	4
4	INNER BEAM	2
5	LOAD LUGS	2
6	END CAP	2
7	STOP PLATE	2
8	LOCATION PIN	2
9	FRONTGUIDE PLATE	2
10	M10 x 25 BUTTON HEAD CAP SCREW	8

NOTES:

1. ALL WELDING TO AS 1554.1 CAT SP
2. ALL WELDS 6mm CFW
3. ALL STEEL PLATE TO AS3678
4. ALL HOLLOW SECTIONS TO AS1163 GRD350
5. 6.5T GRD "S" SAFETY BOW SHACKLES TOP & BOTTOM
6. LIFTING SLING APEX ANGLE 60 DEGREES
7. PROOF LOAD & MARKINGS TO AS 4991
8. TARE WEIGHT 96KG



D.O.T.
ENGINEERING

1 / 57 PARAMOUNT DRV
WANGARA. 6065
WESTERN AUSTRALIA.

TEL: (08) 9302 4166

FAX: (08) 9302 4099

THIS DRAWING AND THE INFORMATION ON IT
REMAINS THE PROPERTY OF DOT ENGINEERING
WRITTEN PERMISSION MUST BE OBTAINED FROM
DOT ENGINEERING TO COPY OR REPRODUCE
THE WHOLE OR PART OF THIS DRAWING.

DRAWN	RM	TITLE 3000-5000 EXTENDABLE SPREADER BEAM		
CHECKED		SIZE 5T WLL ALL POS.	SCALE 1:10	DATE 13-Jul-12
APPROVED		PROJECT BEAMS	DWG 11137 - 1	REV 0