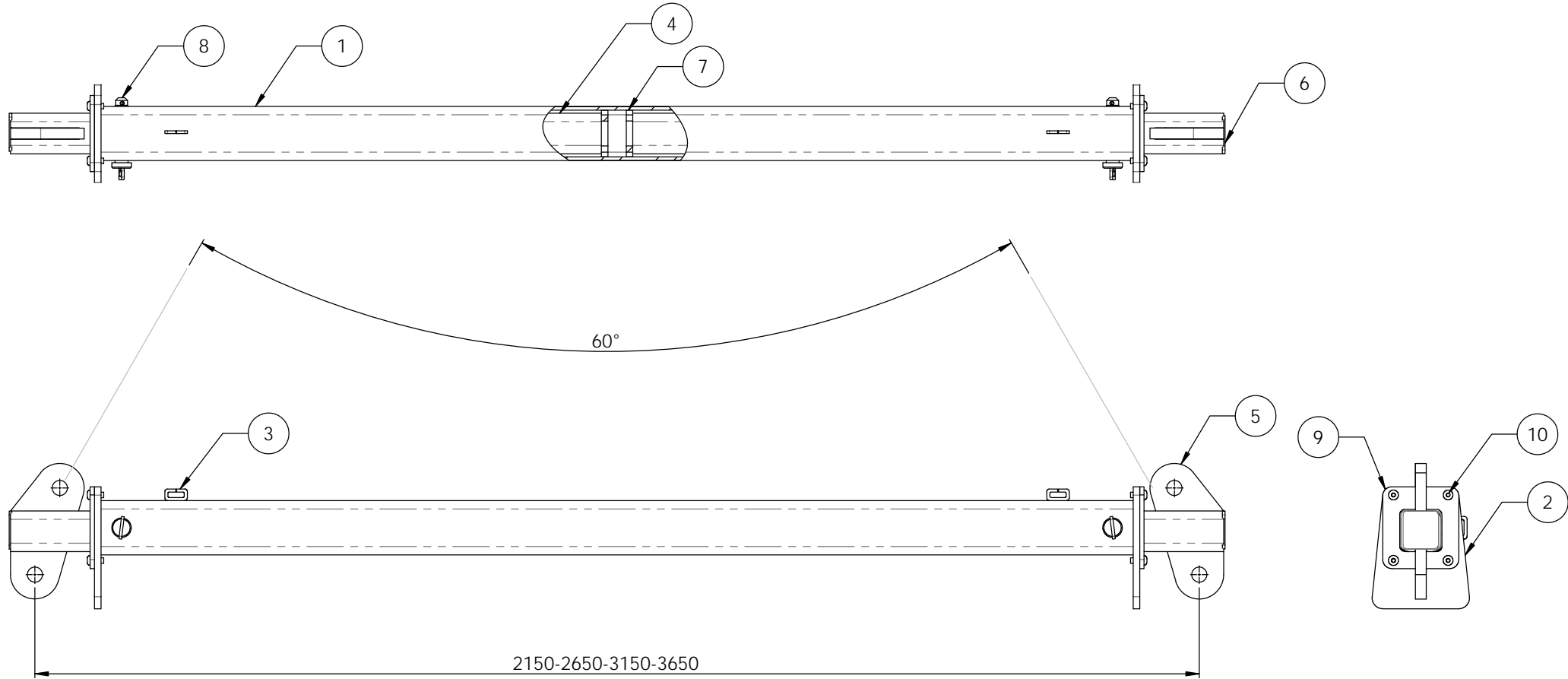


NOTES:

1. ALL WELDING TO AS 1554.1 CAT SP
2. ALL WELDS 6mm CFW
3. ALL STEEL PLATE TO AS3678
4. ALL HOLLOW SECTIONS TO AS1163 GRD350
5. 6.5T GRD "S" SAFETY BOW SHACKLES TOP & BOTTOM
6. LIFTING SLING APEX ANGLE 60 DEGREES
7. PROOF LOAD & MARKINGS TO AS 4991
8. TARE WEIGHT 74KG

ITEM NO.	PART NUMBER	QTY.
1	OUTER BEAM	1
2	GUIDE PLATE	2
3	SPLIT LINK	4
4	INNER BEAM	2
5	LUG	2
6	END CAP	2
7	STOP PLATE	2
8	LOCATION PIN	2
9	FRONTGUIDE PLATE	2
10	M10 x 25 BUTTON HEAD CAP SCREW	8



**D.O.T.**  
**ENGINEERING**

1 / 57 PARAMOUNT DRV  
WANGARA. 6065  
WESTERN AUSTRALIA.

TEL: (08) 9302 4166

FAX: (08) 9302 4099

THIS DRAWING AND THE INFORMATION ON IT  
REMAINS THE PROPERTY OF DOT ENGINEERING  
WRITTEN PERMISSION MUST BE OBTAINED FROM  
DOT ENGINEERING TO COPY OR REPRODUCE  
THE WHOLE OR PART OF THIS DRAWING.

DRAWN

RM

TITLE 2150-3650 EXTENDABLE SPREADER BEAM

CHECKED

SIZE 10T WLL ALL POS.

SCALE

1:7.5

DATE

29-Aug-12

APPROVED

PROJECT BEAMS

DWG

10803 - 1

REV

0