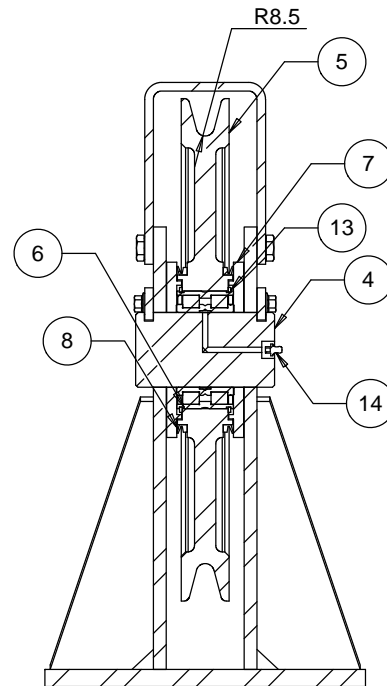
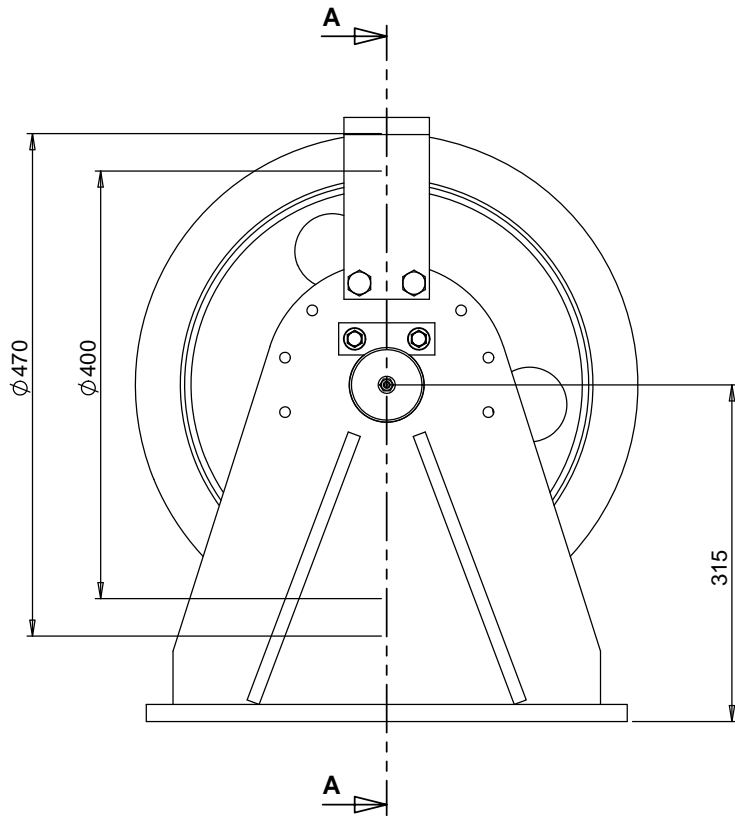
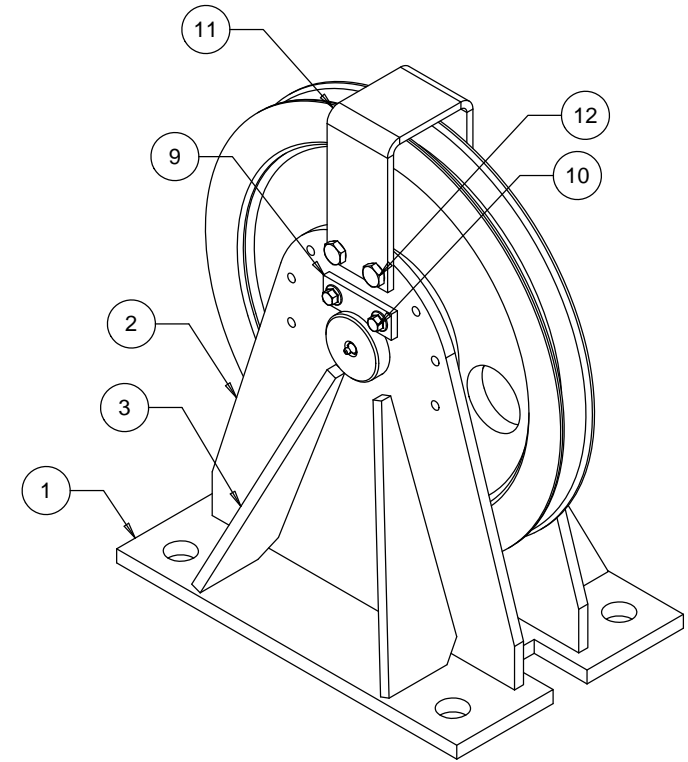


- NOTE:
1. ALL WELDING TO AS 1554.1 CAT SP
  2. ALL WELDS 6mm CFW
  3. ALL STEEL PLATE TO AS 3678
  4. TARE WEIGHT 81KG

FINISH POWDER COAT PRIME DULUX E- PRIME 40-60um  
TOP COAT DULUX DURALLOY FG SATIN 80-100um



SECTION A-A

ITEM NO.	PART NUMBER	QTY.
1	BASE PLATE	1
2	SIDE PLATE	2
3	GUSSET	4
4	PIN	1
5	SHEAVE	1
6	INA/FAG SL045014-PP	1
7	LABRINTH PLATE	2
8	SEAL	2
9	KEEPER PLATE	2
10	M10 x 20 GRD 8.8 BOLT	4
11	ROPE KEEPER	1
12	M12 x 20 GRD 8.8 BOLTS	4
13	3200-110 RETAINING RING	2
14	M6 x 1 GREASE NIPPLE	1

**D.O.T.**  
**ENGINEERING**

1 / 57 PARAMOUNT DRV  
WANGARA. 6065  
WESTERN AUSTRALIA.

TEL: (08) 9302 4166

FAX: (08) 9302 4099

THIS DRAWING AND THE INFORMATION ON IT  
REMAINS THE PROPERTY OF DOT ENGINEERING  
WRITTEN PERMISSION MUST BE OBTAINED FROM  
DOT ENGINEERING TO COPY OR REPRODUCE  
THE WHOLE OR PART OF THIS DRAWING.

DRAWN

RM

TITLE 400 DIAMETER 16mm WIRE ROPE SHEAVE

CHECKED

SIZE 400

SCALE 1:5

DATE 25-Nov-12

APPROVED

PROJECT SHEAVES

DWG 11189 - 1

REV 0