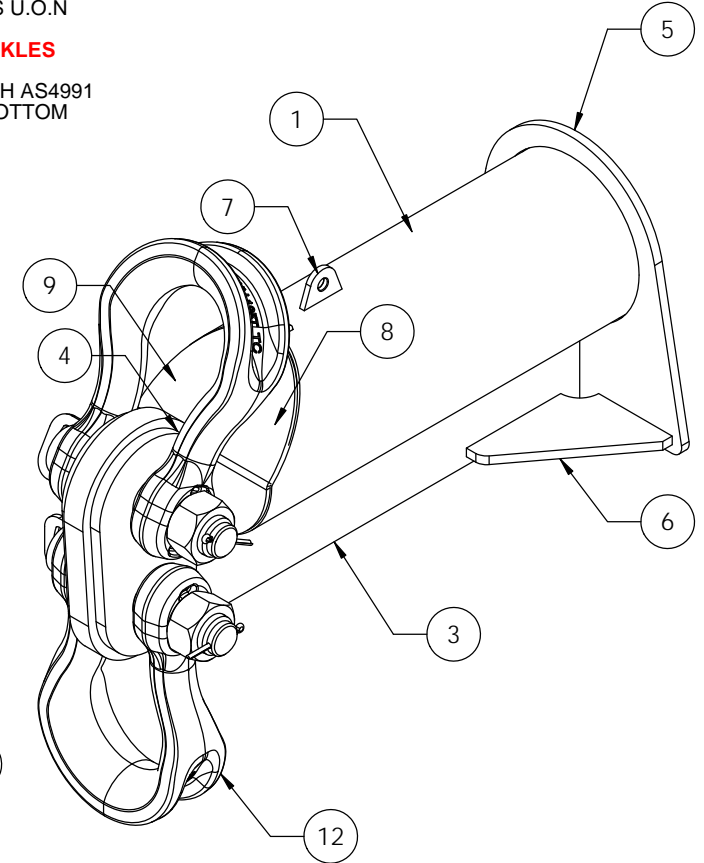
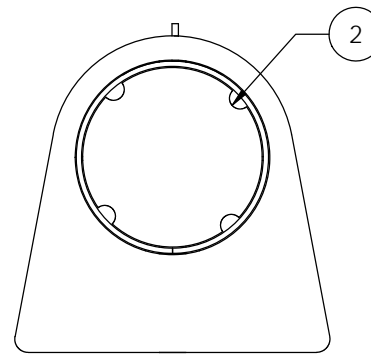
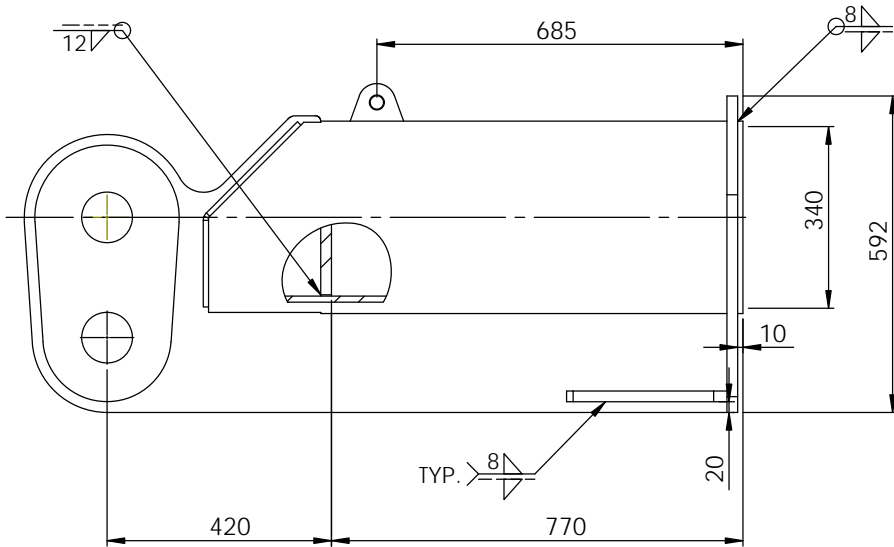
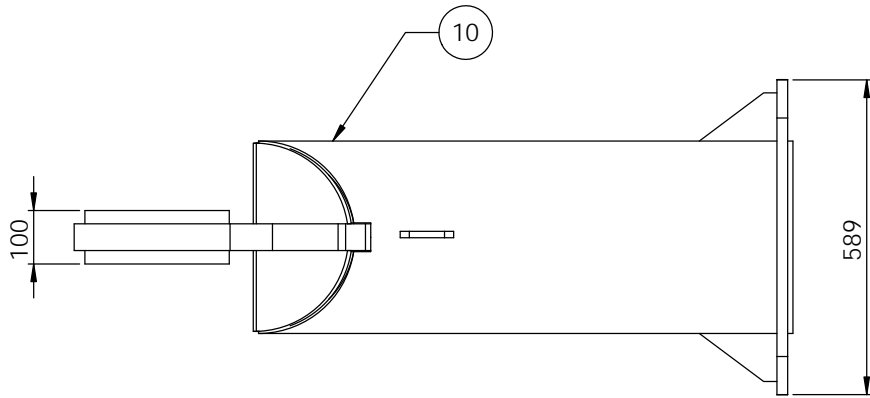


PIPE	LUG CENTRES	MAXIMUM SLING APEX ANGLE
323.9 x 12.7 WALL GRD C350LO AS1163	>8000-12000	60 DEGREES
323.9 x 9.53 WALL GRD C350LO AS1163	3000-8000	60 DEGREES

NOTE:

1. ALL WELDING TO COMPLY WITH AS1554.1 CAT SP
2. ALL WELDS 10mm CONTINUOUS FILLET WELDS U.O.N
3. ALL STEEL PLATE TO COMPLY WITH AS3678
- 4. TARE WEIGHT 328KG EACH EXCLUDING SHACKLES**
5. FINISH HOT DIP GALVANISED
6. PROOF LOAD AND MARKINGS TO COMPLY WITH AS4991
7. 85T GRD "S" SAFETY BOW SHACKLES TOP & BOTTOM OR 125T SLING SAVER SHACKLES
8. MAXIMUM SPREADER BEAM LENGTH 12m



ITEM NO.	PART NUMBER	Default QTY.	QTY
10	BODY	1	
2	BACK PLATE	1	
3	LUG PLATE	1	
4	CHEEK PLATES	2	
5	FRONT PLATE	1	
6	GUSSET	2	
7	HANDLING LUG STD. 2T LUG	1	
8	RH END CAP	1	
9	LH END CAP	1	
10	END CAP ASSEMBLY	1	
11	85T SAFETY BOW SHACKLE	2	
12	125T SLING SAVER SHACKLE		2

**D.O.T.
ENGINEERING**

1 / 57 PARAMOUNT DRV
WANGARA. 6065
WESTERN AUSTRALIA.

TEL: (08) 9302 4166

FAX: (08) 9302 4099

THIS DRAWING AND THE INFORMATION ON IT
REMAINS THE PROPERTY OF DOT ENGINEERING
WRITTEN PERMISSION MUST BE OBTAINED FROM
DOT ENGINEERING TO COPY OR REPRODUCE
THE WHOLE OR PART OF THIS DRAWING.

DRAWN

RM

TITLE SPREADER BEAM END CAPS TO SUIT 300 NB PIPE

CHECKED

SIZE 145T WLL PER PAIR

SCALE 1:10

DATE 20-Nov-12

APPROVED

PROJECT BEAMS

DWG 11186 - 1

REV 0