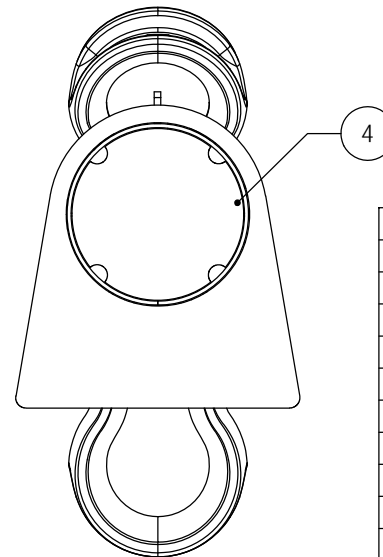
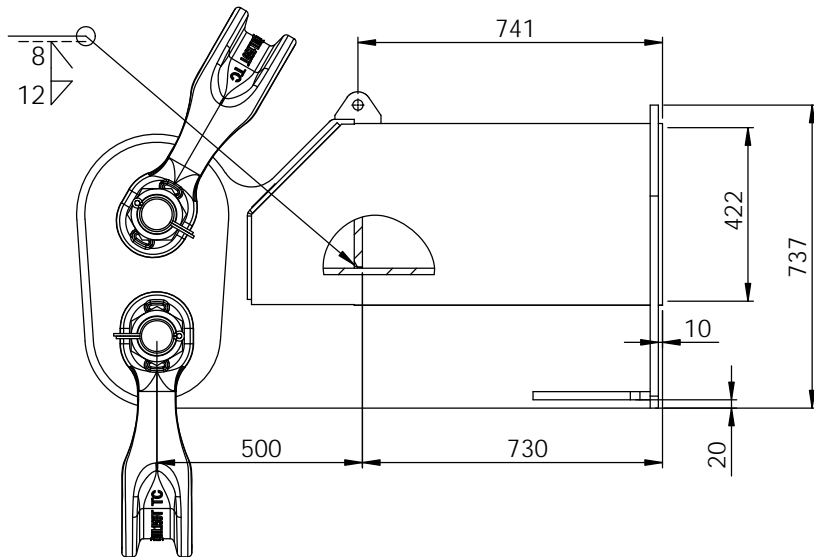
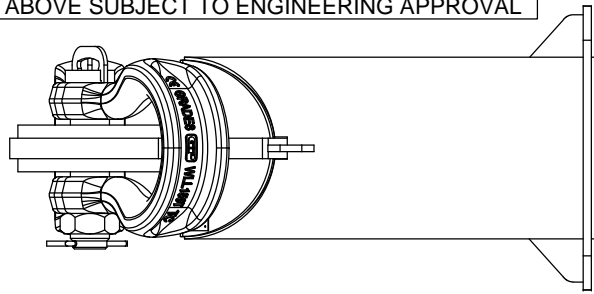
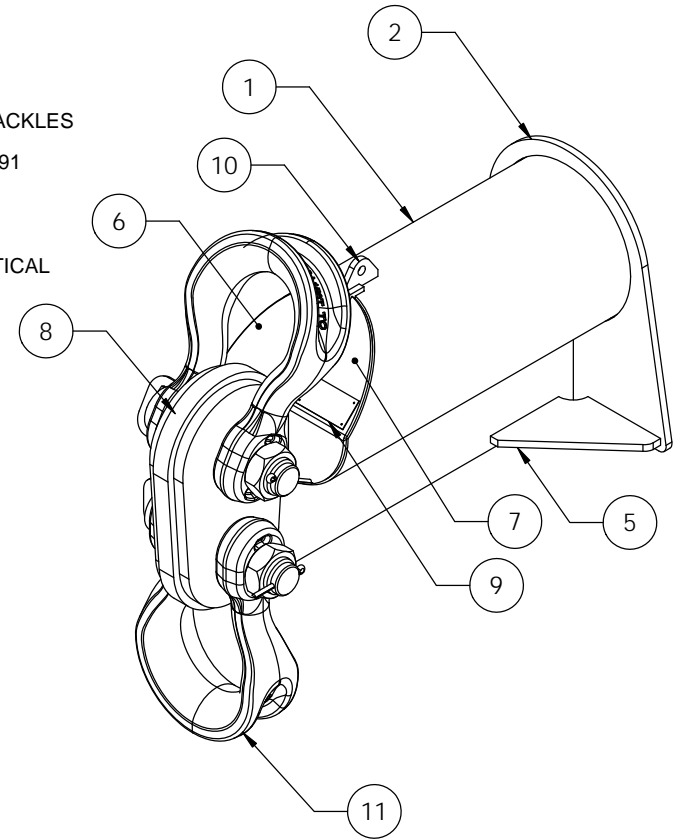


DISTANCE BETWEEN CENTRES	SLING APEX ANGLE-MAX			
	90°	75°	60°	45°
3000mm	205T	230T	250T	260T
4000mm	205T	230T	250T	260T
5000mm	205T	230T	250T	260T
6000mm	205T	230T	250T	260T
7000mm	205T	230T	250T	260T
8000mm	205T	230T	250T	260T
9000mm	205T	230T	250T	260T
10000mm	205T	230T	250T	260T
11000mm	205T	230T	250T	260T
12000mm	205T	230T	250T	260T
13000mm	180T	230T	250T	260T
14000mm	160T	200T	250T	260T
15000mm	135T	170T	220T	260T

ALL VARIATIONS TO ABOVE SUBJECT TO ENGINEERING APPROVAL

NOTE:

1. ALL WELDING TO COMPLY WITH AS1554.1 CAT SP
2. ALL WELDS 10mm CONTINUOUS FILLET WELDS U.O.N
3. ALL STEEL PLATE TO COMPLY WITH AS3678
4. TARE WEIGHT 485KG EACH EXCLUDING SHACKLES
5. TARE WEIGHT OF ASSEMBLY 2395KG EXCLUDING SHACKLES
6. FINISH HOT DIP GALVANISED
7. PROOF LOAD AND MARKINGS TO COMPLY WITH AS4991
8. 150T SLING SAVE SHACKLES TOP & BOTTOM
9. PIPE 406.4 x 12.7 WALL GRD C350LO AS1163
10. LIFTING SLING APEX ANGLE AS PER CHART
11. MAXIMUM SPREADER BEAM LENGTH 15m
12. LIFTED LOAD TO BE WITHIN 0.5 DEGREES FROM VERTICAL



ITEM NO.	PART NUMBER	QTY.
1	BODY	1
2	FRONT PLATE	1
3	LUG PLATE	1
4	BACK PLATE	1
5	GUSSETT	2
6	MirrorRH END CAP	1
7	RH END CAP	1
8	CHEEK PLATE	2
9	OPERATION PLATE	1
10	HANDLING LUG	1
11	150T VANBEEST SLING SAVER SHACKLE	2

D.O.T.
ENGINEERING

1 / 57 PARAMOUNT DRV
WANGARA. 6065
WESTERN AUSTRALIA.

TEL: (08) 9302 4166

FAX: (08) 9302 4099

THIS DRAWING AND THE INFORMATION ON IT
REMAINS THE PROPERTY OF DOT ENGINEERING
WRITTEN PERMISSION MUST BE OBTAINED FROM
DOT ENGINEERING TO COPY OR REPRODUCE
THE WHOLE OR PART OF THIS DRAWING.

DRAWN

RM

CHECKED

APPROVED

TITLE SPREADER BEAM END CAP TO SUIT 400 NB PIPE

SIZE 220T WLL PER PAIR

SCALE 1:13

DATE 14-May-11

PROJECT BEAMS

DWG 10423-1 - 1

REV 2